

New Jersey Map

Location: Paramus, New Jersey
 Completion Date: 1998
 Client: County of Bergen

Bergen Pines County Hospital, now known as Bergen Regional Medical Center is a 1,185 bed medical-surgical hospital residing on a landscaped 65 acre campus in Paramus, NJ and consists of nine buildings totaling 1.2 Million sq. ft.

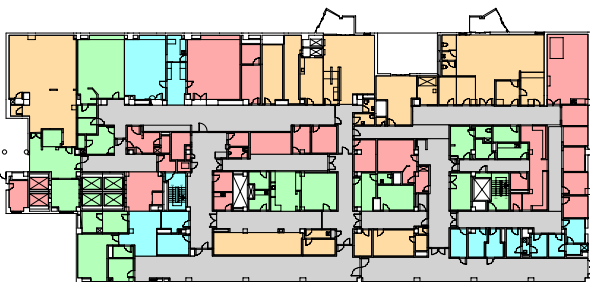
TSIG, in partnership with York Hunter was hired to conduct a complete facilities audit. TSIG field verified all interior spaces, and created accurate CAD documentation for the entire facility. The CAD documentation was then integrated into a Visual Facilities Management System (VFMS™) developed on the Aperture Engine. VFMS™ allows the user to view floor plans and data in a fully integrated, cohesive working environment.

The system offers the following advantages:

- Effective management and optimal use of existing facilities
- Meets with various government reporting requirements, for example, the JCAHO
- Planning future expansion, acquisitions and retirement of buildings
- Preparation of budgets for capital improvement and deferred maintenance



Bergen Pines County Hospital: Site Plan



Building 11: First Floor Plan

